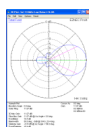
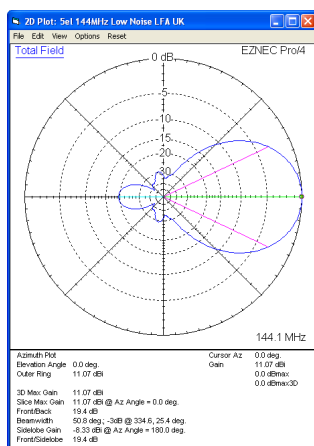


144MHz to 148MHz Yagis: 5 element 144MHz LFA Yagi



Sales price £159.95

Sales price without tax £133.29

Tax amount £26.66

A 5 element low-noise 144MHz LFA Yagi

Description

A 5 element 144-146MHz low-noise LFA Yagi

The G0KSC LFA Yagi is a major step forward in the development of the Yagi Antenna, **it provides a low-noise front-end for your radio so you hear more weak signals**. This compact 5 element 144Mhz LFA provides stunning performance across the whole 2M band (144-146MHz Specify if you require a different frequency range). Hard to beat with a direct 50 Ohm feed point and no matching losses!!

The LFA loop along with the great pattern helps to reduce noise and ensure the best user experience with the weakest signals being heard not lost in noise. Designed with the very latest modelling software packages costing 10's of thousands of pounds, not 30 year old software costing around \$100.00!! **Accuracy** in model and real-world performance assured.

Our antennas are constructed with the best quality materials in order that the best mechanical construction can be achieved, not the cheapest and most profitable! Even a digital caliper is used (with an accuracy of .01mm) to measure the elements during production to ensure they are within 0.2mm of what they should be, ensuring they work as well as our software model predicts.

- Marine grade Stainless Steel Fittings
- Original Stauff Insulation clamps
- Mill finished boom and elements for highest levels of accuracy

For more information This email address is being protected from spambots. You need JavaScript enabled to view it.

Performance

Gain: 11.16dBi @ 145MHz

F/B: 19.59dB @ 145MHz

Peak Gain: 11.18dBi

Gain 10m above ground: 16.93dBi

Peak F/B: 20.32dB

Power Rating: 5kw

SWR: Below 1.4:1 from 144MHz to 146MHz

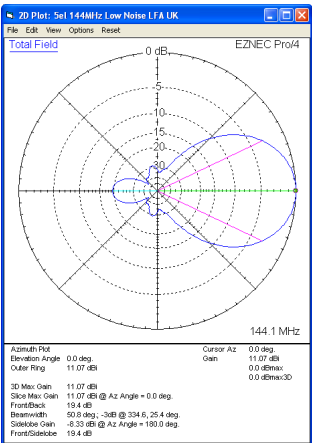
Boom Length: 1.789m

REAR MOUNT AVAILABLE UPON REQUEST AND REQUIRED FOR VERTICAL MOUNTING

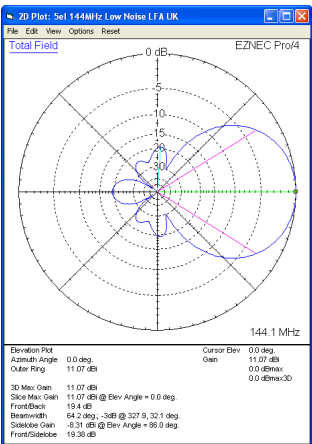
Specification

This antenna is made with a 1/2 inch (12.7mm) and 3/8 inch (9.525mm) diameter tube LFA loop and 1/4 inch (6.35mm) solid rod elements. It also has fully insulated elements which will ensure continuous, high performance for many years to come. Boom is 1.25 inch square 16SWG aluminum. **It is not made cheaply, it is made to perform and to do so for many years.**

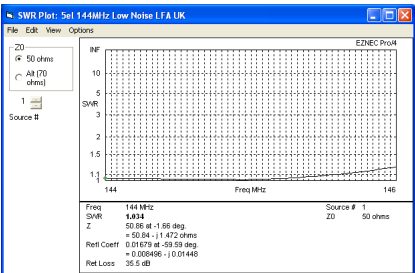
No figures are made up here as they are in some Ham Radio adverts, all performance figures are verified in the very latest commercial (no freeware) software simulation packages with some antennas being professionally confirmed on an antenna range.



Azimuth Plot

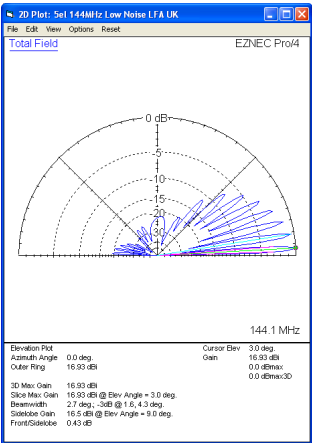


Elevation Plot

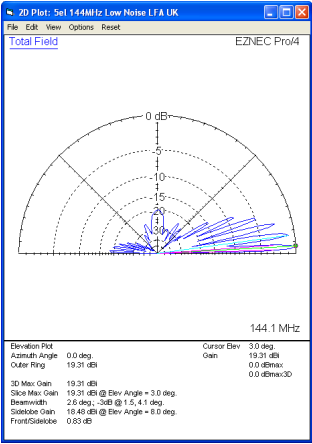


SWR

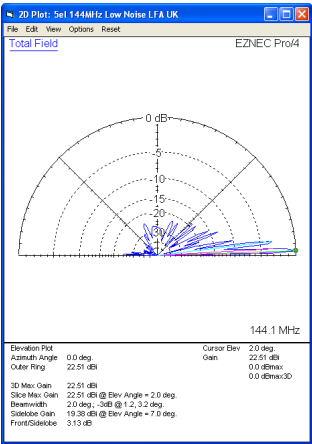
144MHz to 148MHz Yagis: 5 element 144MHz LFA Yagi



Single 5el at 10m above ground



2 5el, 1.6m apart, bottom antenna 10m up



4x 5el 2m apart, bottom antenna 10m above ground

Manufactured the right way, not the cheapest way!

* Where possible marine grade stainless steel components are used.