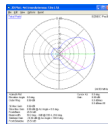


A low-noise 24MHz LFA Yagi



Description

Available through **WiMo Germany** and **DX Engineering in the USA** - for Direct factory supply, Email us for pricing and time lines.

www.dxengineering.com - www.wimo.com

A 4 element High Performance LFA Yagi

The G0KSC LFA Yagi is a major step forward in the development of the Yagi Antenna, **it provides a low-noise front-end for your radio so you hear more weak signals** while at the same time maximising all round performance. This compact 4 element 24Mhz LFA provides stunning performance across the whole 12m band (24.800 - 25.00MHz). Hard to beat with a direct 50 Ohm feedpoint and no matching losses and suppression of unwanted noise !! More information on the LFA Yagi can be found [here](#).

NOTE: With all our HF antennas we can custom design your element taper and element size requirements in order to cater for all weather and installation requirements This email address is being protected from spambots. You need JavaScript enabled to view it. us for details.

Performance

8.99dBi @ 24.920MHz

25.53dB @ 24.920MHz

Peak Gain: 9.09dBi

Gain at 10m above Ground: 14.15dBi @ 24.920MHz

Peak F/B: 26.01dB

Power Rating: 5kw

SWR: Below 1.1:1 from 24.890 - 24.980MHz

Boom Length: 5.525m

Weight: 9.38Kg / 20.69LB

Turning Radius: 4.058m / 13.34ft

Wind Loading: 0.29 Square Metres / 3.11 Square feet

Wind Survival: 167KPH / 104MPH

Other options available if higher wind loading/survival is required.

24MHz LFA Yagis: 4 element 24MHz LFA Yagi (5.3m)

Stacking Distance: 5-8.5m (6.6m recommended)

2 Stacked Gain @ 6.5m spacing: 11.5dBi

2 Stacked F/B: 24.53dB

2 Stacked Gain @ 6.5m Spacing 12m above ground: 16.43dBi

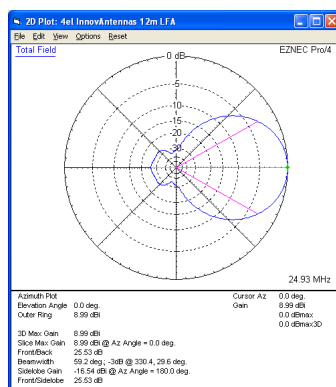
Specification - light Duty version (heavy duty version available upon request)

This antenna is made with 5/8 inch (15.88mm) centre elements that has 1/2 inch (12.7mm) forming the middle taper section and 3/8 inch (9.525mm) outer elements. The antenna has fully insulated elements which will ensure continuous, high performance for many years to come. Boom to mast brackets are included with all antennas which will support 2 inch (50mm) masts. Boom is 1.5 inch square 16SWG aluminum.

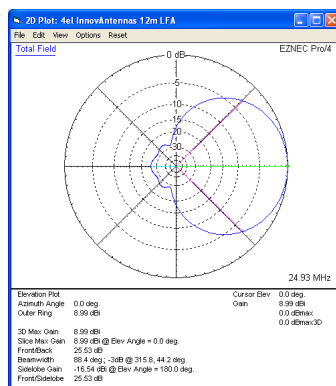
Our antennas are constructed with the best quality materials in order that the best mechanical construction can be achieved, not the cheapest and most profitable! Even a digital caliper is used (with an accuracy of .01mm) to measure the elements during production to ensure they are within 0.2mm of what they should be, this ensures they work as well as our software model predicts.

Note: Much development time has gone into our antennas, not just on basic electromagnetic design, we are able to model the effect of insulators, booms and other objects to ensure the make up of our antennas have least effect on performance and pattern degradation. More information can be found [here](#)

- **Marine grade Stainless Steel Fittings***
- **Original Stauff Insulation clamps**
- **Mill finished boom and elements for highest levels of accuracy**

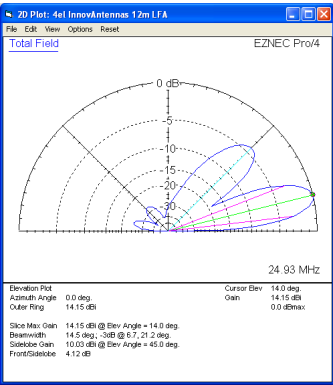


Azimuth Plot

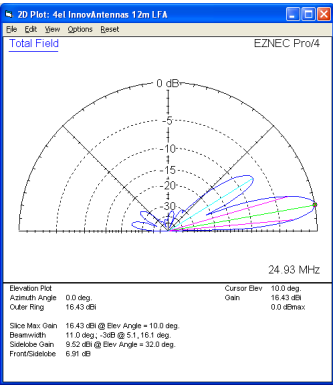


Elevation Plot

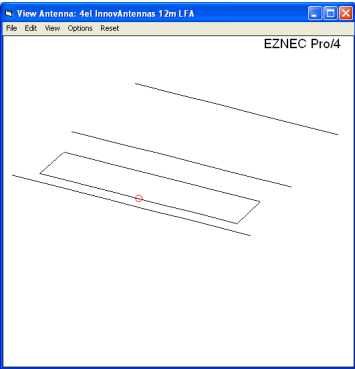
24MHz LFA Yagis: 4 element 24MHz LFA Yagi (5.3m)



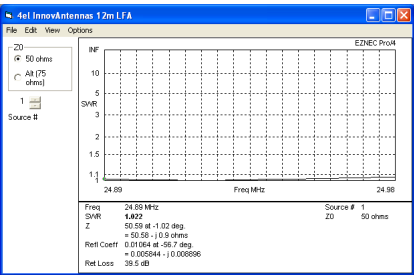
Single 4 element LFA up 12m above ground



2 x 4 el LFA Yagi 6.6m apart with the bottom antenna 12m above ground



The 12m LFA element layout



SWR

Manufactured the right way, not the cheapest way!

24MHz LFA Yagis: 4 element 24MHz LFA Yagi (5.3m)

*Where possible marine grade stainless steel is used.

//